

Product information RI 311

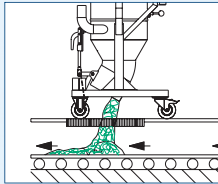
gray cast iron and sand suction unit / blast gravel

- » a.c., d.c. or compressed air drives
- » manually operated emptying flap for easy emptying of heavy media into underfloor conveyors or troughs
- » running gear with fork-lift truck adapter or crane transport
- » the drive does not have to be removed for emptying

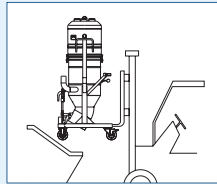
Features



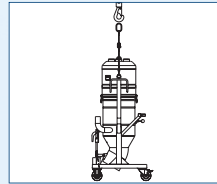
Manually operated chip discharge flap



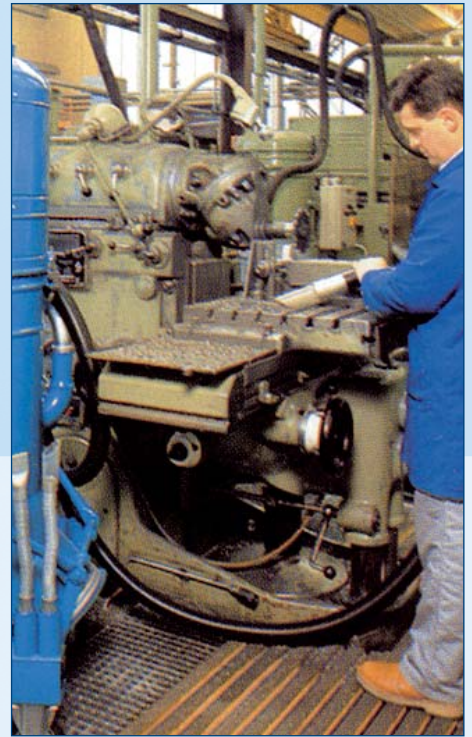
Emptying into an underfloor conveyor



Emptying with a fork-lift truck



Emptying with a crane



RI 311



Gray cast iron, sand and blast gravel suction extraction

Very rugged industrial suction device, developed for the suction extraction of heavy media, such as sand, gray cast and sandblast gravel, e.g. application in foundries.

Technical data for the series RI 311

Suction unit type	RI 311 D3	RI 311 D4
Output [kW]	3,0	4,0
Voltage [V]	400	400
Max. vacuum [kPa]	23	26
Max. air flow rate [Nm ³ /h]	320	520
Sound level dB [A]	60	62
Dimensions [mm]	880 x 714 x 2.010	880 x 714 x 2.130
Weight [kg]	164	183
Article number	990 0340	990 0303

